

QUEST 9 Biofeedback CLASP64 Software



THE FUTURE OF MEDICINE TODAY!
**Quantum Universal Energetic
System Technology**



Mandelay Ltd.
www.scio-educor.com

About us

With over 20 years of experience in the biofeedback industry, Mandelay Kft provides the most advanced and cutting-edge biofeedback technology worldwide. Founded in Budapest, Hungary, Mandelay Kft is the proud developer and distributor of the Quest9 biofeedback system.

Our friendly and reliable team of experts and support staff are equipped with an in-depth knowledge base and strive to help you on your journey of wellness discovery.

More questions?

info@scio-educator.com

Mandelay mission & vision

In 20 years of operations all over the world, our mission has always been to manufacture the best quality products, empower and inspire visionary wellness practitioners through optimum service and support. Currently, we service over 10,000 practitioners worldwide, through our local representatives, training facilities and marketing support; along with extensive education programs and support affiliates.

Our mission is to be the leading distributor of innovative health enhancement technologies, including our NEW product the QUEST9 Biofeedback System.

More questions?
info@scio-educator.com



What is BIOFEEDBACK- and how might it help me?

Biofeedback measures various physiological parameters of the body. The QUEST9 biofeedback system helps manage and retrain stress patterns, educates clients on crucial information about stress and empowers them to make lifestyle changes to support overall health and well-being.

Improved sleep

Improved general health

Reduction of emotions: anger, fear, gloominess ...

Ability to relax more quickly

Reduction of Stress and Nervousness

Improved muscle mobility coordination, flexibility, sport performance, ENHANCED Mental Clarity, Memory and Improved attention decreased pain/headaches

More information: <https://www.ncbi.nlm.nih.gov/pmc/articles/PMC3687555/>

How does Biofeedback work?

Biofeedback utilizes electro-dermal sensors to measure Galvanic Skin Resistance (GSR), also referred to as Electro-Dermal Response (EDR). GSR measures mild electrical impulses on the surface of our skin, which change due to moisture. The moisture of the skin changes according to the body's degree of stress or relaxation. In the QUEST9 we have increased the output frequency of the device to make it more effective. We have also included a dedicated EEG circuit and ECG chip, so we can get a more detailed pictures.

These technologies are able to capture the body's analogue electrical signals and translate those signals into meaningful information through complex algorithmic software. The software also interprets the signals and relates them to known stress patterns of the different body parts.



Biofeedback session with QUEST9

The sensors/electrodes comfortably read electrical impulses from the body and send the information to the computer software, which acts as a monitoring device.

The biofeedback practitioner is able to educate the client about the specific areas of the body and mind in need of stress reduction and re-education based on the information translated between the biofeedback device and software to the computer screen.

These data findings allow the client to better understand their reactions to stress and learn how to better control their physiological responses.



The process of biofeedback helps the body to remember the balanced and stress-free state

QUEST9

In approximately five minutes, the QUEST9 Biofeedback System can simultaneously detect and record information about the individual client's stress reactions.

The QUEST9 Biofeedback System reveals a client's voltage, amperage, resistance and other electrical calculations which may be important indicators of wellness.

Different lifestyle factors which could be contributing to the body's overall stress load are reflected in the QUEST9 Biofeedback System's Suppression Obstruction Cure (SOC) scores.

Information about reactions to over 12,000 subtle stress related signatures and physiological parameters are also reported for client education.



How the system works?

The QUEST9 is unique in the field of biofeedback because of its proprietary algorithmic formulas and measurements of the body electric. The sophisticated wave-form generator also works to re-train harmony to the physical and emotional bodies by addressing aberrant stressful reactions to help the client create more cohesive and coherent patterns.

The QUEST9 utilizes four comfortable, conductive straps with sensors that measure Electro Dermal Response on the wrists, ankles and one forehead strap. These subtle changes of moisture and temperature on the skin measure the body's degree of stress and/or relaxation.

It is accurate and sensitive enough to measure the EDR and electro-physiological reactivity of stress reactions to a multitude of stress factors which commonly effect the human body. The results which appear in the MATRIX of the QUEST9 software interface, allow the practitioner to have greater access into the profile of stress factors pertinent to lifestyle and wellness.

How can the QUEST9 improve my health?

The QUEST9 Biofeedback System functions in a multitude of ways, it can send signals to measure and record electro-physiological reactions to a multitude of items, re-educate certain muscles, nerves or organs or it can retrain areas of the body and mind to healthier patterns.

In other cases, it can invert certain signals which seem to be closely associated with a stress pattern.

Pre-designed stress reduction protocols may be used, or programs can be designed to meet the specific individual needs of each client. There are hundreds of different training programs that may be used limitless combinations to obtain optimum results.

The QUEST9 is by far the most comprehensive biofeedback system on the market today.



Waveform
Channel
Sensitivity
Regulated Output
Frequency

Maximum Output Voltage
Wave Polarity
Modulation Rise time
Wave slope
Timer
Output
Power
High Cut
Low Cut
Input Impedance
Noise
Design
Weight
Enclosure Material
Principles of operation
Voltage (inputs – outputs)



QXCI

Square
4 channel
1 kHz
Current less than 250 mA
0-1000 Hz
4 volts DC
Alternating or pulsed DC-programmable
Variant-programmable
Variant
0 to 30 min
Indicators LED
Source LPT
Selectable-Software
Selectable-Software
» 1 M ohm
less than 5 V peak to peak (10 Hz to 10 KHz)
188x144x66 (H) mm
750 grams only the device and with accessories 1.5 kg
Recyclable high impact molded plastic
Biofeedback
Not measured



SCIO

Programmable. Pre-programmed: Square, Spike,Sine (Dual channel), Saw, etc.
1 to 12 tristate
3 mV
Current 0 to 850 A / Channels
0 to 25kHz High Quality,
0 to 100 kHz Normal
4 V DC, 4 V AC p-p
Programmable,
Programmable
Programmable
Programmable
Indicators LED
Source USB
Programmable
Programmable
» 1 Mohm
» 5 V p-p (10 –to 100kHz), EEG Chs.
200x175x75
0,8 Kg / 2,0 Kg
Recyclable high impact plastic
Galvanic Skin
3500 V AC



EDUCATOR

Programmable. Pre-programmed: Square, Spike,Sine (Dual channel), Saw, etc.
1 to 12 tristate, (4 are dedicated for EEG)
V (EEG Channels) 100 V (others)
Current 0 to 6 mA / Channels
3 channel, 1, 2 ch.: 0 to 100kHz, 3 ch.:0 to 25kHz High
0 to 100 kHz Normal Quality, 1 MHz
4 V DC, 4 V AC p-p
programmable, 1,2 ch.: phase 0 to 360 programmable
Programmable
Programmable
Programmable
Graphic LCD screen
Source USB3
Programmable
300 to 0 Hz – 8 poles Chebyshev (Hardwaredigital)
» 1 Mohm
» 5 V p-p (10 –to 100kHz), EEG Chs.
200x150x60
540g
Recyclable high impact plastic
Galvanic Skin, EEG
4000 V AC



QUEST 9

Programmable. Pre-programmed: Square, Spike, Sine, Saw etc.
1 to 12 tristate
3mV
current 0 to 4mA/channel
0 to 75kHz High quality,
0 to 100kHz Normal quality
4VDC, 4VAC p-p
Programmable.
Programmable.
Programmable.
Indicator LED
Source USB
Programmable.
Programmable.
> 1Mohm
5V p-p
220x175x60
1300 g
Metal Cover
Biofeedback, Galvanic Skin, EEG, ECG
5200V AC

Why is the QUEST9 better than other devices?

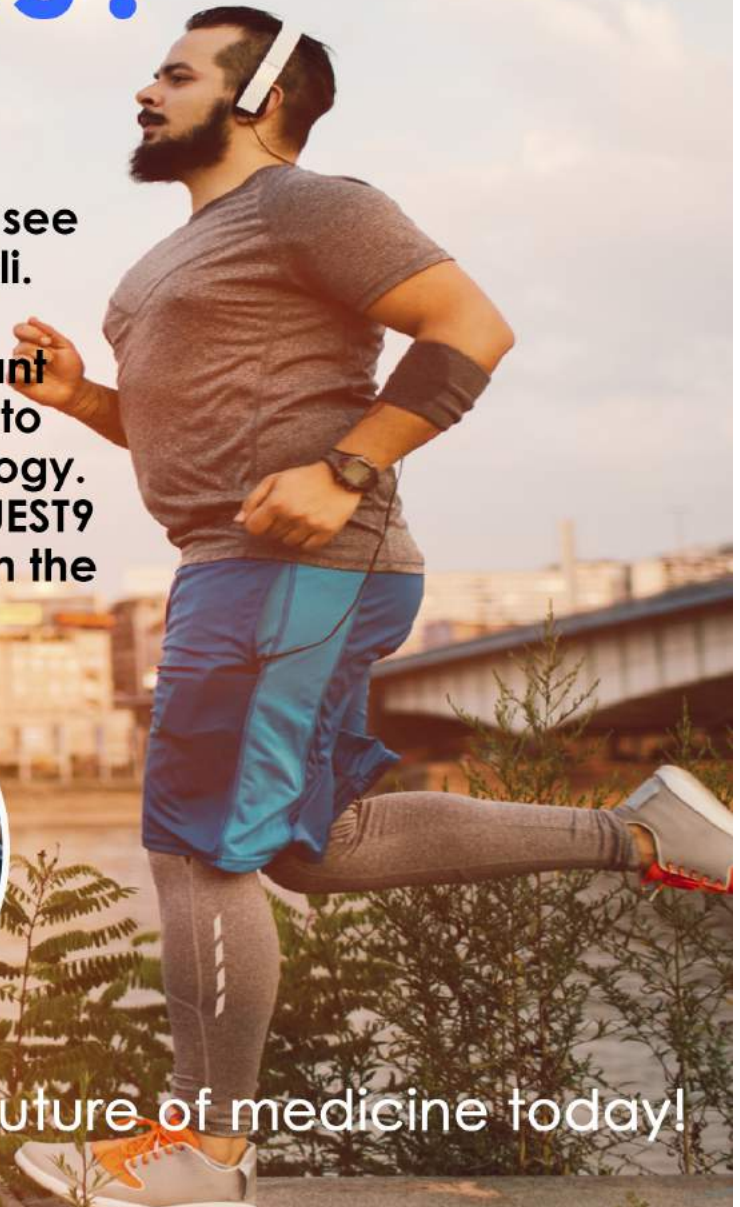
The most important aspect of QUEST9 biofeedback is not just measuring the body electric, but measuring the changes. The continued measuring and feedback of the system allows us to see the client's subtle reactions to words, ideas, items, or any stimuli.

The reactions or reactivity to a multitude of stimuli is an important tool in the QUEST9's ability to help clients retrain their reactions to subtle, nonverbal and unconscious parameters of their physiology. This is what makes biofeedback work and the design of the QUEST9 and its software ensure that this feedback process is enabled in the best possible way.



Mandelay Ltd.
www.scio-educator.com

The future of medicine today!



Most people find biofeedback soothing, relaxing and beneficial

- Ability to relax more quickly
- Deeper state of relaxation during sleep
- Reduction of stress and hypertension
- Improved general health
- Reduction of anger
- Reduced fearfulness
- Fewer anxiety attacks
- Amelioration of sorrow
- Reduction of the depth of depression
- Heightened muscle mobility
- Enhanced mental clarity
- Better attention focus
- Less attention to pain and stressors
- More able to manage stress and pain

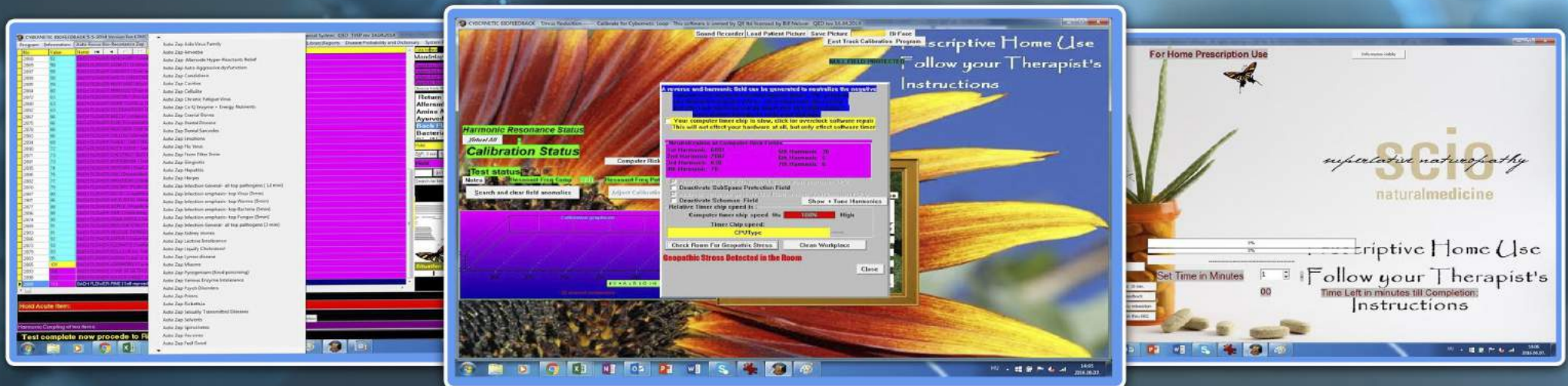


CLASP64 software

The CLASP64 contributes to the QUEST9's ability to retrieve 90,000 different signals that your body is giving out at any given time!

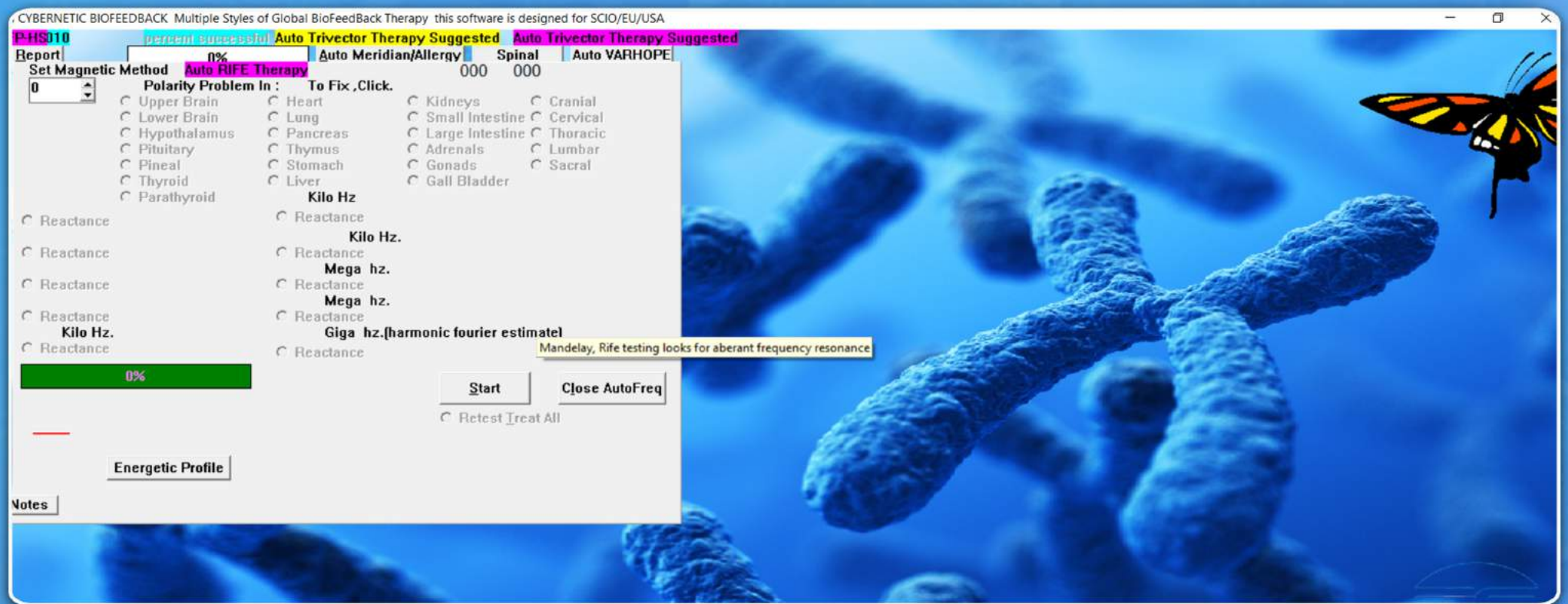
CLASP64, in combination with QUEST9 is by far, the most comprehensive biofeedback software on the market today. Pre-designed stress reduction protocols, or programs specifically designed to meet each client's special needs can be utilized.

There are hundreds of different training program options that can be implemented in limitless combinations to achieve optimum results.



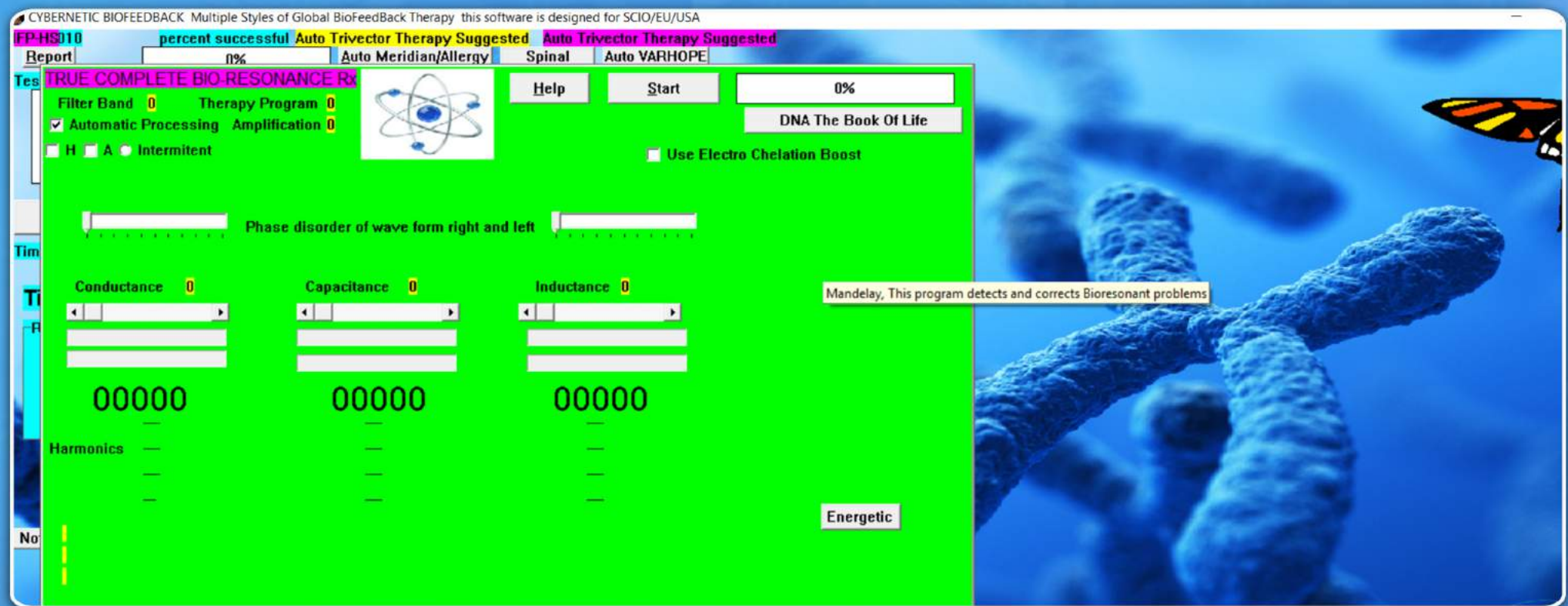
Auto frequency/training program

Performs a baseline measurement of stress related imbalances in the polarity of the organ systems, and facilitates retraining for those stress patterns.



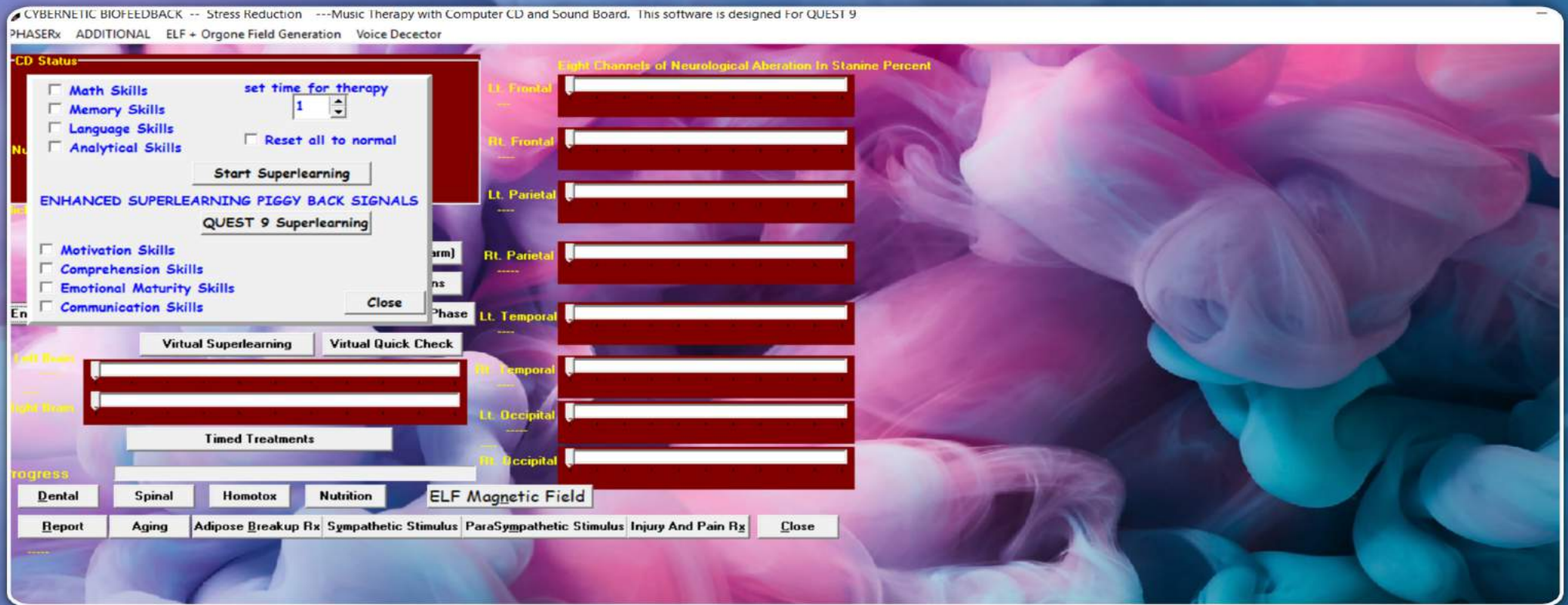
Auto trivector training program

Retrains stress patterns in three primaries found in healthy tissues: CAPACITANCE, INDUCTANCE, CONDUCTANCE



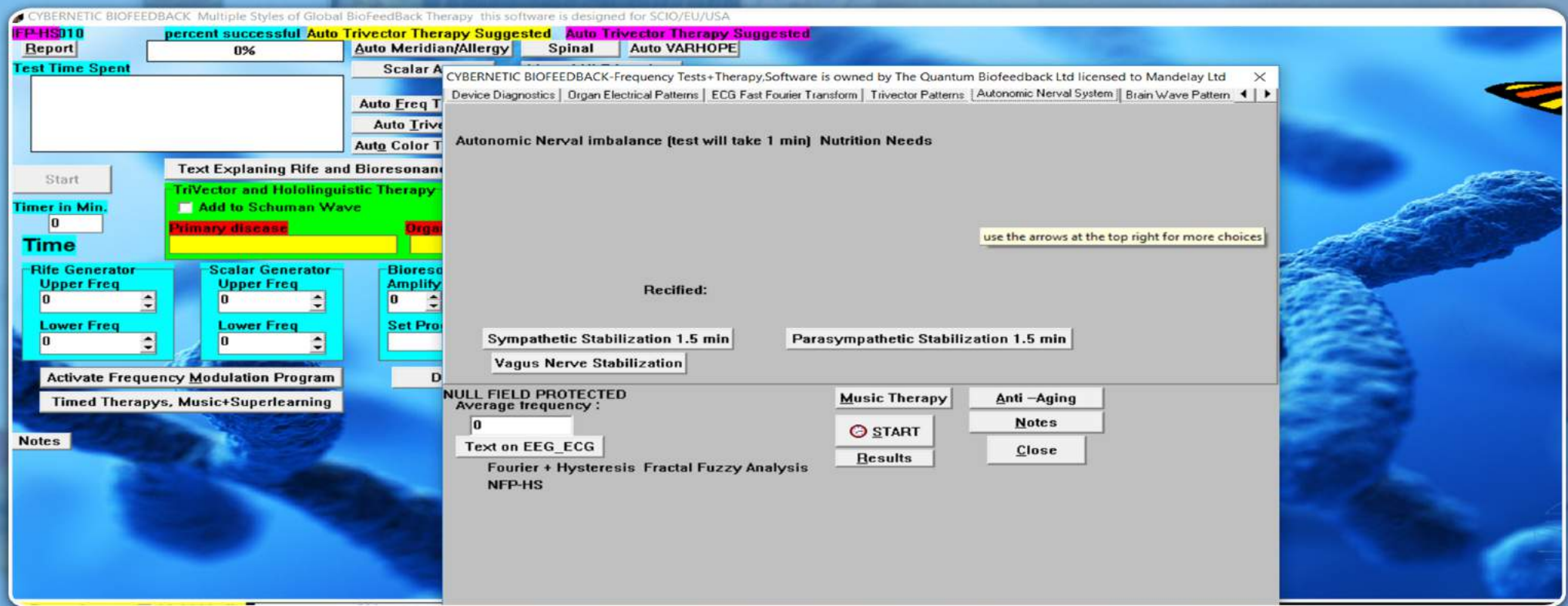
Super-learning training program

Re-educates the brain to function for optimal learning.



Autonomic nervous training program

Allows for retraining stress patterns in the sympathetic, parasympathetic and vagus nervous systems



Spinal muscular re-education

Re-educates the muscles and nerves associated with and supporting the spine, in relation to the corresponding emotions.

CYBERNETIC BIOFEEDBACK ----- QED TRIVECTOR SPINAL FOCI ANALYSIS This software is designed For SCIO/EU/USA

NFP HS **NFP** **Reset Colors**

Please Adjust the Spine before Testing. The System will show remaining Foci

Dbl Click On Dermatome Area to Treat + Release Foci

Cervical

- ☐ C1
- ☐ C2
- ☐ C3
- ☐ C4
- ☐ C5
- ☐ C6
- ☐ C7

Thoracic

- ☐ T1
- ☐ T2
- ☐ T3
- ☐ T4
- ☐ T5
- ☐ T6
- ☐ T7
- ☐ T8
- ☐ T9
- ☐ T10
- ☐ T11
- ☐ T12

Lumbar

- ☐ L1
- ☐ L2
- ☐ L3
- ☐ L4
- ☐ L5

Cranial Sacral

- ☐ Cranial
- ☐ Sacral
- ☐ Occiput

Sensitivity

- ☐ Maximum
- ☒ Normal
- ☐ Minimal

Test + Treat Trivector Energy Flow

Click on vertebrae for extra attention of therapy

To test + treat sarcodes dbl click on name

Neuro Emotional Complex NEC

Nutrition Profile

Allersodes

Cranial Sacral

Original Sarcodes Results

Access Orthopedic Reports

Dermatomes

Muscular re-education for athletes

Allows for re-education and stress reduction programs specific to performance enhancement

CYBERNETIC BIOFEEDBACK ----- QED TRIVECTOR SPINAL FOCI ANALYSIS This software is designed For SCIO/EU/USA

☐ Dopamine

☐ TSH

☐ T4

☐ T3

☐ Check for long undefined therapy

☐ Acetylcholine

☐ Adrenalin

☐ Disrupt Hypothalamus-GallBladder link

☐ Endorphins

☐ Growth Hormone

☐ Stabilize Liver hormone regulation

☐ Cortisol Decrease

☐ Testosterone+Male Androgens

☐ IGA

☐ IGF

☐ Cortisol Increase

☐ Estrone + Female Androgens

☐ IGM

☐ IGG

☐ Lutenizing hormone

☐ Progesterone

☐ Balance Fatty Acids

☐ PSA

Stim-Hormones Clicked

Sport SuperConscious Report

Stimulate Hormones clicked above

Stabilize Hormones

Oxygenation Stimulation

Mind--Body Focus

Coordination Stimulation

Muscle Building

Flexibility Stimulation

Stim Mental Visual Imagery

Check for long undefined therapy

Select a therapy radiobutton, set additional checks, set time, click Start

SPORT TREATMENT PROGRAMS

☐ Build Eye-Hand Coordinate

☐ Reduce Paranoia+Distrust

☐ Build Eye-Foot Coordinate

☒ Reduce Home Sickness

☐ Treat Dryness in the area

☐ Increase Mental Focus

☐ Treat Damp in the Area

☐ Release Emotional Stress

☐ Treat Cold in the Area

☒ Treat Phlegm in the Area

☐ Treat Heat in the Area

☐ Treat Energy Stagnation

☐ Treat Weak Chi

☐ Treat Wind in the Area

☐ Adjust Trivector disorders

☐ Send Detox Pulse into area

Send Detox Pulse into area

Wholistic Organ Health Restorer

Emotional conflict with:

Over all Conflict Reduction

☐ Reduce Conflict

☒ Reduce Conflict

☒ Reduce Conflict

SELF

The Game

The Team

Start QUEST 9 Sport Freq Enhanced Performance #1

Start QUEST 9 Sport Freq Enhanced Performance #2

Start QUEST 9 Sport Freq Enhanced Performance #3

1 Min

20 min

40 min

imed Therapies Sarcodes

START

Nutrition and homeopathy feedback training program

Sends homeopathic and nutritional signatures for stress reduction

Notes | Report

80	Vitamin A family	62	Protein Digestion
54	Vitamin B complex family	78	Carbohydrate Digestion
55	Vitamin G complex family	79	Fat Digestion
70	Vitamin C family	51	General Digestion
56	Vitamin D family	81	Internal Enzymes
77	Vitamin E family		
88	Vitamin F (fatty acids)	Some Data on Risk Menu	
56	Vitamin K family	111	Minerals
92	Vitamin U family (co Q)	107	Amino Acids
69	Biochemic Tissue Salts	100	Oriental Herbal Combos

Click on Label to see more

Calculate, strike this key first

NFP

Good Foods

Virtual Doctor

Make Master Nutritional Report

Access Reports + Texts



Close

Insert Disease:

Intwined :

Stress and Cortisol

Transfer To Test Screen



Stress and cortisol rebalancing program

Helps clients redevelop healthy adrenal patterns in relation to stress responses

CYBERNETIC BIOFEEDBACK ----- Nutritional and Homeopathic Feedback Energetics/ This software is designed For SCIO/EU/USA

NFP-HS

Notes Report

No	Value	Name
92 Adrenalin	2491 55	Leucine Enkephalin Brain hormone for pain & emotional control.
72 Growth Hormone	2533 56	BEAVERICIN Bioactive peptide, shows emotional problems of sensory perception
82 Testosterone	2528 56	SOMATOSTATIN Part of growth hormone, ids growth concern. OPIOID PEPTIDE
84 Cortisol	2479 56	ANGIOTENSIN II (HYPERTENSIN II) Bioactive peptide hormone related to stress a
78 Sex hormones collective	2477 56	ADRENOCOTROPIC HORMONE (ACTH - CORTICOTROPIN A) Bioactive peptide.
	2505 56	GALANIN For stomach and intestinal disease. [bowel, colon, intestine, stomach] C
93 Pineal Pituitary Hypothalamus	2545 57	Thyrocalcitonin Bone and calcium regulator, ids with thyroid or calcium diseases
91 Aldosterone	2559 57	PROSTAGLANDIN E Ids inflammation disease.]
70 Corticotropin Releasing factor	2536 58	CORTICOTROPIN RELEASING FACTOR Ids disturbance of adrenal or pituitary horn
87 ACTH	2543 58	Proenkephalin Hormone for pain and emotion control.
	2488 58	a-Endorphin [B-Lipotropin 61-76] Type of pain regulatory hormone.
	2494 59	METHIONINE ENKEPHALINE (Tyr-Gly-Gly-Phe-Leu-Lys) For emotional and pain co
	2502 59	Leupeptin Enzyme Inhibitor Peptide for immune and white blood cell manufacture
	2562 59	Thyrotropin Releasing Hormone - TSH Ids thyroid disorder, treats depression, fat
	2475 61	DOPAMINE Hormone for starting action and regulating many functions of blood pi
	2486 61	Bradykinin Potentiator B Bioactive peptide, plasma kinin that produces vasodilat
	2554 61	IMMUNOGLOBULIN G Antibody for virus, bacteria, antiviral, cross

DbI Click on name to treat

Adrenal Balance Set time min 1

Close

Make Report

Hormonal Imbalances = T3, T4, Pineal, Hypothalamus, Adrenal Insufficiency, Thymus, Infection, Lack of forgiveness, Guilt, Self delusion,

NLP- neuro linguistic program stress reduction

Re-educates neuro-transmitter reactions and retrains a client's reactions to emotional and mental health factors

Programs Therapies Information- Library Functions Misc Multi Media Stop Movie Special AFE Rx NEW GSR tDCs QRB AFE Super Powers Stimulation Static Small Band Therapies Special QUEST 9 Therapies

Start Advanced Counseling Questions

This program use a variety of NLP+EPR programs to stimu

Dissipate Karma	Ascension Stimulation	Higher Purpose Alignment	Unconscious Reactivity
Stimulate Emotional Growth	Stimulate Insight	Stimulate Creativity	Psych Tests
Neuro-Peptide Balance	Neuro-Peptide Stimulation	Neural Net Stabilization	
Stim Memory	Stim Intelligence	Open Mind Therapy	
Relaxation Pulse 12 sec	Sarcodes	Group NLP	Individual NLP
	Stimulate Lucid Dreaming	Brain scan	Survial Awareness Form
Disrupt the Hypothalamus -Gall Bladder Connection			
Notes	Emotional + Biological Flow	Mental Factors + Emotion Chart	Stress Reduction
		Addiction Release and Relaxation training Video	

Close

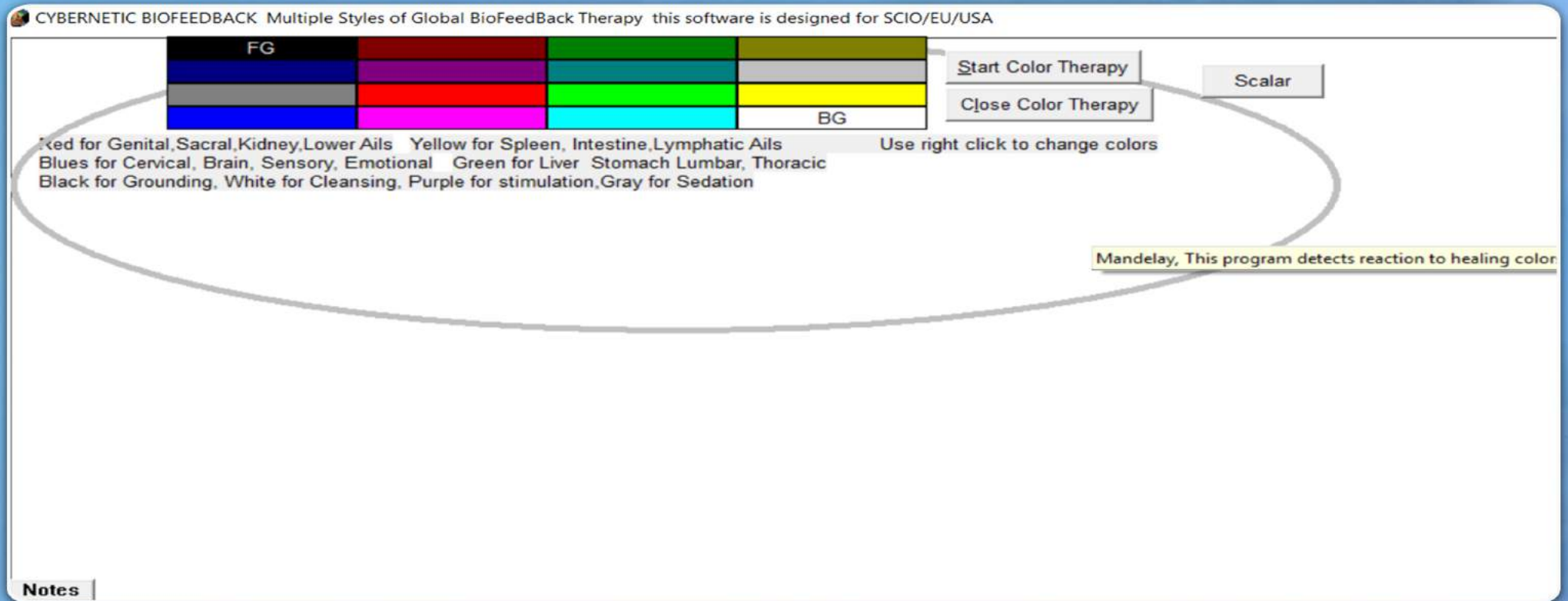


Mandelay Ltd.
www.scio-educator.com

The future of medicine today!

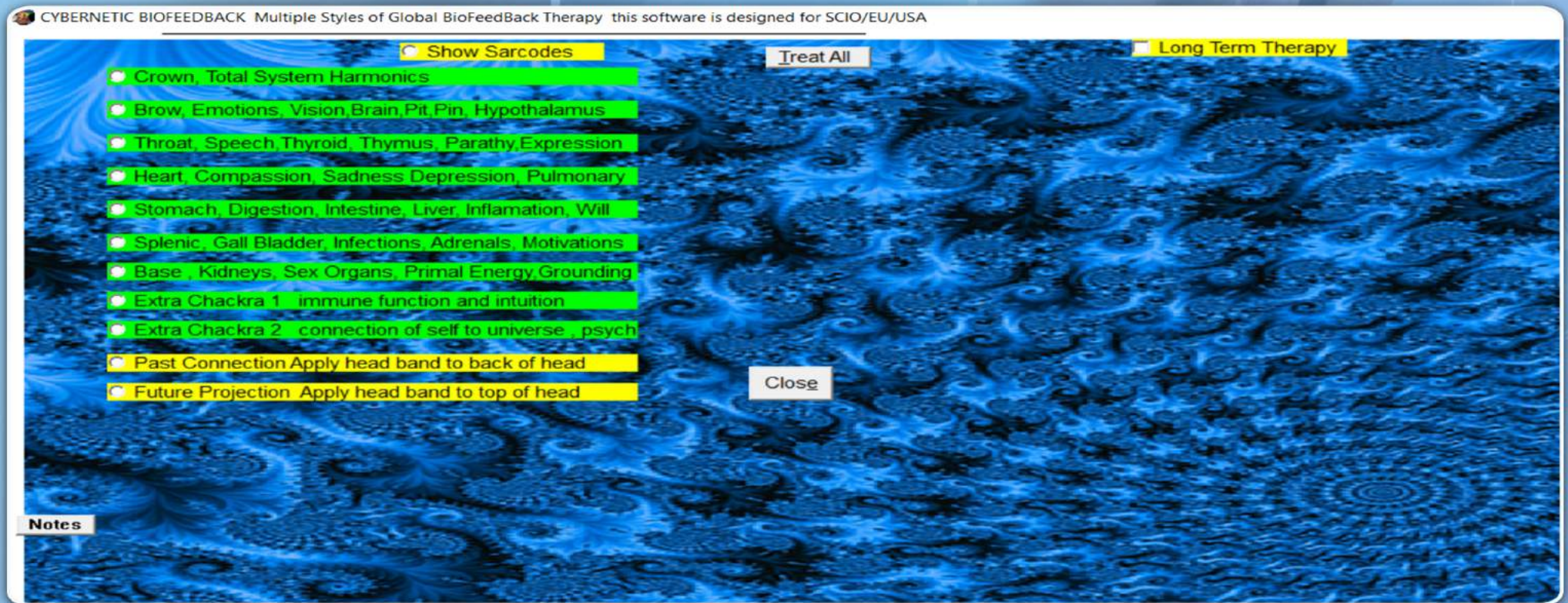
Auto Color therapy training program

Chooses from potential color frequency patterns choosing the ones that will most harmonize the client's stress.



Auto Scalar training program

Provides training protocols and visualizations for balancing stress factors interfering with the subtle energy centers known as the chakras



Unique features of CLASP64 software

Cybernetic loop - a two-way communication between the device and the computer which constantly «checks in» with the client, measuring and reporting progress through audio and visual stimulation
The auto-focus function allows practitioners to individualize their protocols to meet highly detailed and specific needs of each client.

Passive biofeedback - helps clients retrain physiological reactions effortlessly at unconscious/autonomic levels.

Rectification values - calculate how well their clients are responding to the intervention, moment to moment.

User - friendly - performs baseline measures and highlights the most beneficial biofeedback programs for each client and signals when a client has reached maximum training in a session.

Electrical calculations indicating the stress impacts on various physiological parameters (voltage, amperage, resistance, hydration, oxygen, proton and electron pressure)

SOC (Suppression/ Obstruction to Cure) - lifestyle factors contributing to the body's overall stress load, very useful in formulating behavioral changes and psycho-educational interventions.

THE QUEST9 biofeedback system can gently and non-invasively reduce stress and help clients enhance their quality of life

How many sessions are needed?

We recommend clients to make a commitment to their health by investing in multiple sessions in order to truly see and feel the results.

Entrainment is a well-studied phenomenon within physics, by which two separate systems, operating at varying frequencies, will settle into a common frequency when situated within one another's field of influence. It may take the body multiple sessions to entrain or «relearn» healthier patterns.

Some people respond very quickly, especially those whose lifestyle choices are already with good health.



QUEST 9 Features

Cybernetic Loop



Additional factors that contribute to the QUEST9 popularity amongst health professionals internationally are its cybernetic loop, and its ability to auto-focus for maximum training capacity. The cybernetic loop is a two-way communication between the device and the computer; it is constantly “checking in” with the client and measuring their progress. The auto-focus function works in conjunction with our cybernetic loop to allow practitioners to individualize their retraining protocols in order to meet highly detailed and specific needs of each client. This function also allows for what we refer to as “passive biofeedback”; the ability of the QUEST9 Biofeedback System to help retrain a client’s physiological reactions at unconscious / autonomic levels.

Rectification Values

Very few medical, hands-on healing, or mental health modalities give the practitioner the ability to see exactly how well their clients are responding to the intervention, moment to moment. The QUEST9 Biofeedback System actually calculates a percentage of change, giving a rectification value, upon completion of each stress reduction program. This is a huge benefit to practitioners.

QUEST 9 Features

Baseline Measures & Auto-Focus

While the program can allow for incredibly in-depth focusing, it is also exceptionally user-friendly. In most instances, when the practitioner opens a particular training panel the most beneficial biofeedback programs for that client are highlighted, based on that client's reactions to the test of electro-physiological reactions (EPR). Selections can also be made using our auto-focus feature to determine which program in that panel would be most useful.

For example, when working with the Electro-Oscillation Frequency Program the device will first reveal the strongest reactions to specific brainwave activities and patterns, before commencing the re-training process. In the spinal muscular re-education program, the stressors located in the spine are first highlighted in a stress assessment; the practitioner can then commence the re-training. This education process, unique to the QUEST9 Biofeedback System, is also an incredible tool for practitioners and clients alike.

A new vision for well-being

The QUEST 9 Biofeedback System brings our *New Vision for Well-Being* to the global healthcare marketplace. Many clients who receive QUEST9 Biofeedback sessions report that they can “feel” a gentle warmth or tingling sensation during the session. This sensation is a result of increased sensitivity, faster rate of information transfer, greater range of frequency output as well as significant increases in accuracy, range and coherence of the signals delivered by the QUEST9 Biofeedback System.

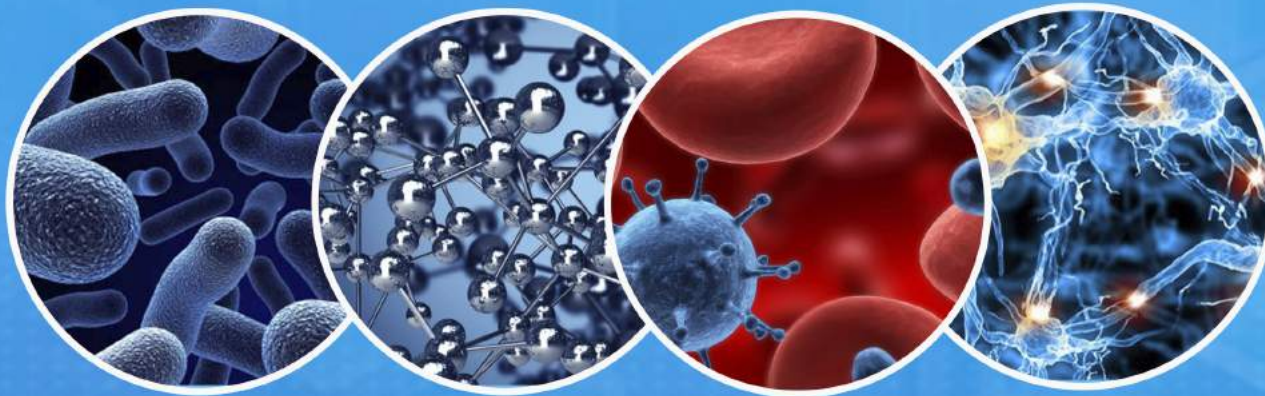
Its capabilities are far advanced from any of its competitor devices. In fact, practitioners internationally are trading in other, older biofeedback devices to ensure the best possible outcomes for their clients, using the very best that the QUEST9 Biofeedback System technology has to offer today.



Mental emotional

One of the most intriguing abilities of the QUEST9 Biofeedback System is in providing insight into mental and emotional states. With a skilled operator, very specific emotional stress and historical information can be uncovered with uncanny accuracy and effectiveness. Discussing relevant emotional stress with athletes helps to validate their emotions and helps them to consciously comprehend the impact that emotional factors have on performance.

All athletes have full lives, and athletics are only a part. Their ability to deal with concerns about family, peers and coaches, finances, relationships, competition pressure and other events in their lives have profound impact on competitiveness. This capability serves as a perfect complement for sport psychology and mental conditioning performed by the athletes' trained counselors and coaches.



The QUEST9 system includes:



THE QUEST9 device

QUEST9 Limb harness wires

QUEST9 Limb harness straps

QUEST9 Head harness

QUEST9 Software flash drive

QUEST9 USB cable

QUEST9 Welcome Folder

QUEST9 Carrying backpack

QUEST9 Retail Box

QUEST9 Warranty card

The QUEST9 device's outer casing is designed of durable metal. The laser engraved test tray on top allows for frequency exchange. It comes with washable, temperature sensing straps and harness for specific electro-sensor placement on wrists, ankles and head.

The device is powered via USB through a computer connected to a medical grade surge protector.

DISCLAIMER

THE QUEST9, IS A BIOFEEDBACK SYSTEM DESIGNED FOR THE PURPOSE OF EDUCATION, STRESS REDUCTION, MUSCLE RE-EDUCATION AND PAIN MANAGEMENT. THE QUEST9 SYSTEM DOES NOT DIAGNOSE, CURE, MITIGATE OR TREAT DISEASE.

CONSULT A LICENSED HEALTH CARE PROFESSIONAL FOR DIAGNOSIS AND TREATMENT OF ANY DISEASE, CONDITION OR DISORDER.



Budapest Home Office
Tel: +36 20 250-7190

Facebook and YouTube: Mandelay-BHO

Instagram: scio_educator_official

Skype: Budapest Home Office

Email: info@scio-educator.com

Twitter: scio-educator

Web: www.scio-educator.com

